



PRODUCTS CATALOG

ELECTRICAL ENCLOSURES & MODULAR CABINETS



20

exmweb.com

WEATHERPROOF JUNCTION BOXES

The 1300 DWPF are used as junction boxes in outdoor installations, or indoors where dripping water is a problem. These enclosures are designed to protect equipment against rain, sleet and snow. Enclosures are made of high quality 16 GA or 14 GA steel. The boxes seams are continuous-

ly welded to prevent rain, sleet or snow from entering and the high quality, oil resistant, gasket ensures integrity. Four external mounting holes are provided. Enclosures are finished with heat fused powder paint, electrostatically applied on a pretreated base. Box is ANSI/ASA 61

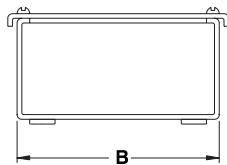
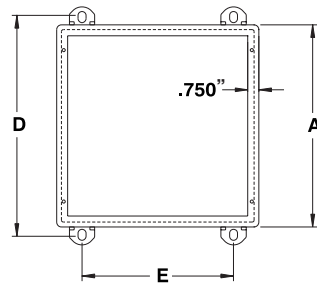
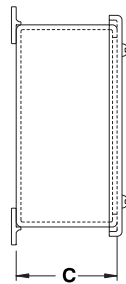
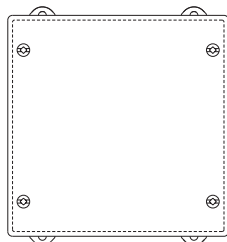
smooth gray (other colors available).

**CSA Certified / UL Listed.
NEMA/EEMAC 3 / IP64**

Refer to p.734 to validate choice of substrate for the application

Note: Dimensions $\leq 24 \times 24 \times 10$ have welded mounting feet just like the 5412 ESMCH.

Dimensions $> 24 \times 24 \times 10$ have mounting holes just like the 5412 ES, but mounting feet are not provided standard. Compatible mounting feet: 885 ESMF1, ESMF2, ESOFM1, ESOMF2, ESOMF1A, ESOMF2A.



CATALOG NUMBER	DIMENSIONS					SHIP WGHT LBS.
	A	B	C	D	E	
1300 DWPF040403	4	4	3	4.500	2	2
1300 DWPF060403	6	4	3	6.500	2	3
1300 DWPF060404	6	4	4	6.500	2	5
1300 DWPF060604	6	6	4	6.500	4	5
1300 DWPF080604	8	6	4	8.500	4	6
1300 DWPF080804	8	8	4	8.500	6	8
1300 DWPF081004	8	10	4	8.500	8	10
1300 DWPF100804	10	8	4	10.500	6	10
1300 DWPF101004	10	10	4	10.500	8	14
1300 DWPF120604	12	6	4	12.500	4	14
1300 DWPF121004	12	10	4	12.500	8	18
1300 DWPF121204	12	12	4	12.500	10	6
1300 DWPF060605	6	6	5	6.500	4	7
1300 DWPF080605	8	6	5	8.500	4	14
1300 DWPF101205	10	12	5	10.500	10	8
1300 DWPF060606	6	6	6	6.500	4	7
1300 DWPF080606	8	6	6	8.500	4	14
1300 DWPF080806	8	8	6	8.500	4	12
1300 DWPF100806	10	8	6	10.500	6	12
1300 DWPF101006	10	10	6	10.500	8	14
1300 DWPF121206	12	12	6	12.500	10	18
1300 DWPF121406	12	14	6	12.500	12	19
1300 DWPF140806	14	8	6	14.500	6	10
1300 DWPF141206	14	12	6	14.500	10	19
1300 DWPF141606	14	16	6	14.500	14	23
1300 DWPF161006	16	10	6	16.500	8	15
1300 DWPF161206	16	12	6	16.500	10	24
1300 DWPF161406	16	14	6	16.500	12	23
1300 DWPF161606	16	16	6	16.500	14	25
1300 DWPF181806	18	18	6	18.500	16	34
1300 DWPF241806	24	18	6	24.500	16	46
1300 DWPF242406	24	24	6	24.500	22	53
1300 DWPF121008	12	10	8	12.500	8	16
1300 DWPF141208	14	12	8	14.500	10	20
1300 DWPF161208	16	12	8	16.500	10	26
1300 DWPF161408	16	14	8	16.500	12	24
1300 DWPF242408	24	24	8	24.500	22	58
1300 DWPF303008	30	30	8	30.500	28	72
1300 DWPF161410	16	14	10	16.500	12	26
1300 DWPF242410	24	24	10	24.500	22	62
1300 DWPF242412	24	24	12	24.500	22	68
1300 DWPF363612	36	36	12	36.500	34	100

† For painted stainless steel, add suffix 'P' to the catalog number (i.e. : 1300DWPF...P)

‡ For stainless steel, add suffix 'SS' to the catalog number (i.e. : 1300 DWPF...SS)



232



p.534